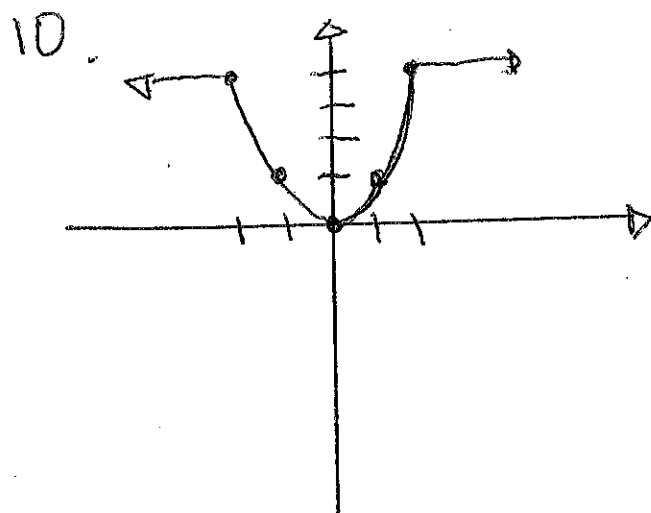
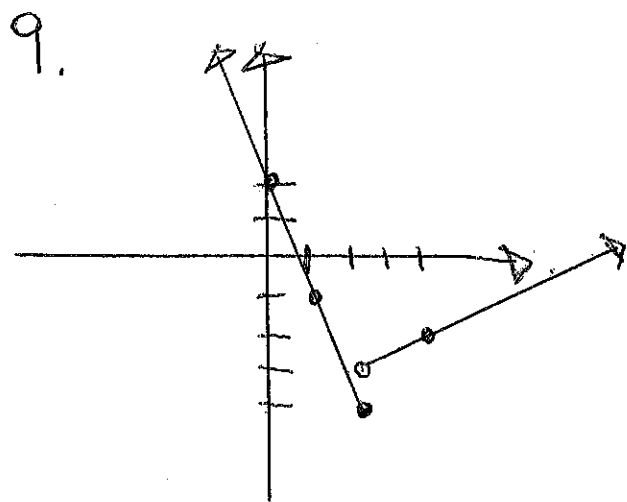
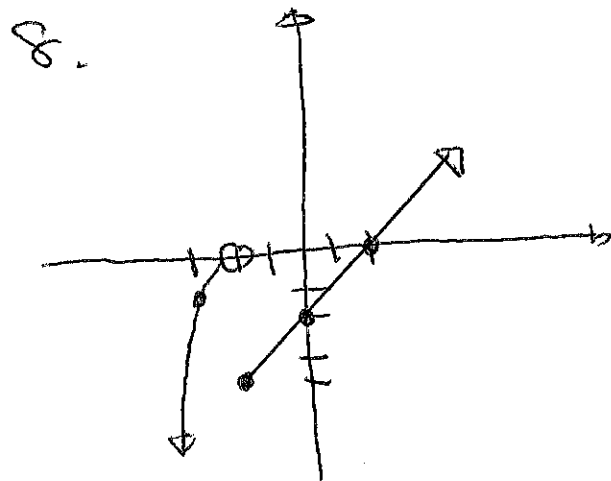
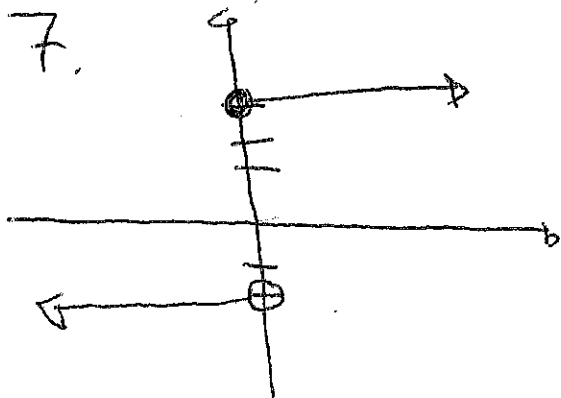


Lesson #12.

1. 16 2. 16 3. 9 4. -14 5. 3 6. -2



11.

$$f(x) = \begin{cases} -x-5 & \text{if } -5 \leq x \leq -2 \\ -x^2+1 & \text{if } -2 < x < 2 \\ (x-3)^3+2 & \text{if } 2 \leq x \leq 4 \end{cases}$$

12. A) $f(x) = \begin{cases} 2x+1 & \text{if } x \leq 0 \\ 4x+1 & \text{if } x > 0 \end{cases}$

B) $g(x) = \begin{cases} -2x+1 & \text{if } x < 0 \\ 1 & \text{if } 0 \leq x \leq 1 \\ 2x-1 & \text{if } x > 1 \end{cases}$